



ecler
VIDEO SYSTEMS

Integración VEO en EclerNet Manager

Víctor Arranz – v.arranz@ecler.com

Sumario

- Integración VEO en EclerNet Manager
 - Hardware Compatible
 - Hardware Integrable
- Botón Net String
- ETH232AD
- External Device

EclerNet Manager



Project Explorer (192.168.1.54 - Local)

- Devices (1 groups)
- Channels (1 groups)
- User Control Panels (6 Panels)
 - MAIN DEMO PANEL (6 pages)
 - HOME (6 controls)
 - Control 627 IMAGE
 - AUDEO (3 controls)
 - IC (3 controls)
 - BG RECTANGLE
 - DEMO SHOWROOM ECLER STATIC TEXT
 - VEO (4 controls)
 - RECUADRO ROJO RECTANGLE
 - LINK1 BUTTON (PAGE LINK)
 - VEO STATIC TEXT
 - Preset_audio_VEO BUTTON
 - DUONET PLAYER A (13 controls)
 - STEREO DEMO (7 controls)
 - DUONET PLAYER B (12 controls)

Groups from Device Container

All ☐ OFF ☒ ON

Members from Device Group : All

Device Name	Power	Preset
DUO-NET DUONET FORM	<input type="checkbox"/>	<input type="text"/>
MIMO4040DN MIMO4040DN FORM	<input type="checkbox"/>	<input type="text"/>
PAGNETDN PAGER	<input type="checkbox"/>	<input type="text"/>
MIMO88 MASTER FORM Mo	<input type="checkbox"/>	<input type="text"/>
MIMO88 SLAVE SLAVE FORM	<input type="checkbox"/>	<input type="text"/>
NXAG-200 NXA FORM	<input checked="" type="checkbox"/>	<input type="text"/>
MIMO12125G MIMO TECHO FORM	<input type="checkbox"/>	<input type="text"/>
DN44BOB BOB-A	<input type="checkbox"/>	<input type="text"/>
DN44BOB BOB-B	<input type="checkbox"/>	<input type="text"/>
WPNETTOUCH SCREEN	<input type="checkbox"/>	<input type="text"/>
WPNETAK	<input type="checkbox"/>	<input type="text"/>

Device List

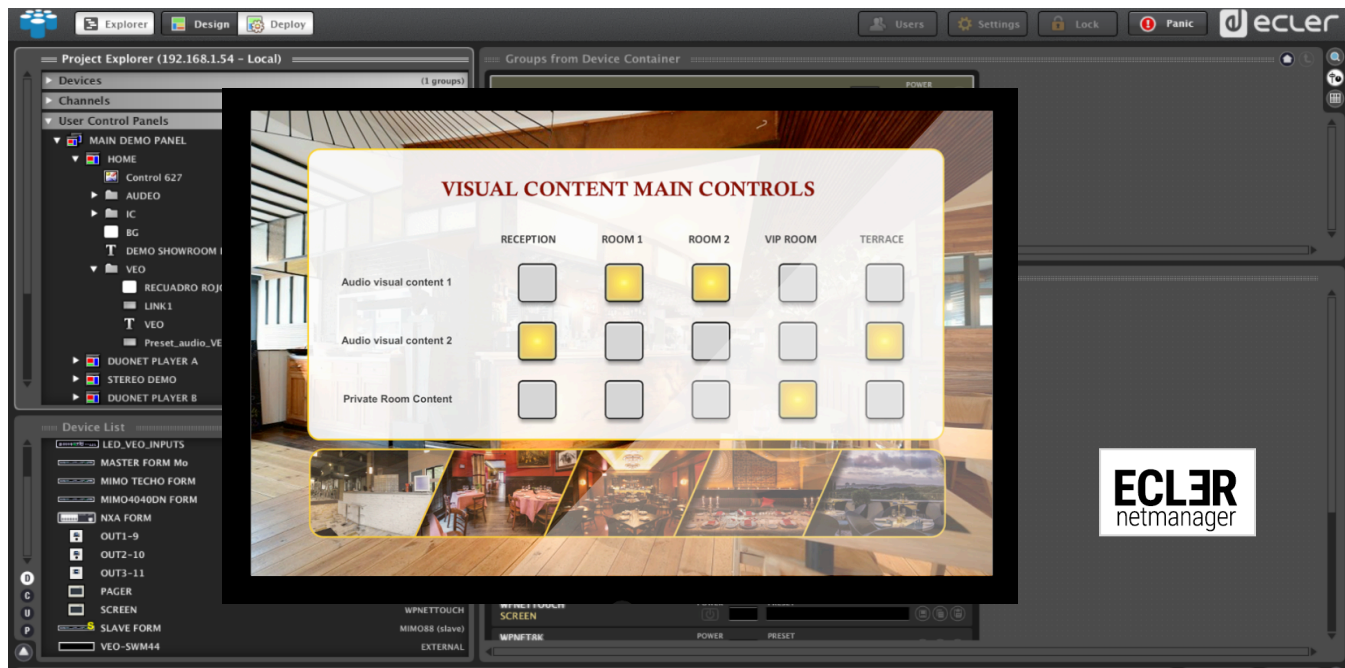
Device Name	Device Type
LED_VEO_INPUTS	VEO-XTI2L
MASTER FORM Mo	MIMO88
MIMO TECHO FORM	MIMO12125G
MIMO4040DN FORM	MIMO4040DN
NXA FORM	NXAG-200
OUT1-9	WPNETEX
OUT2-10	WPNET4KV
OUT3-11	WPNET8K
PAGER	PAGNETDN
SCREEN	WPNETTOUCH
SLAVE FORM	MIMO88 (slave)
VEO-SWM44	EXTERNAL

ECLER netmanager

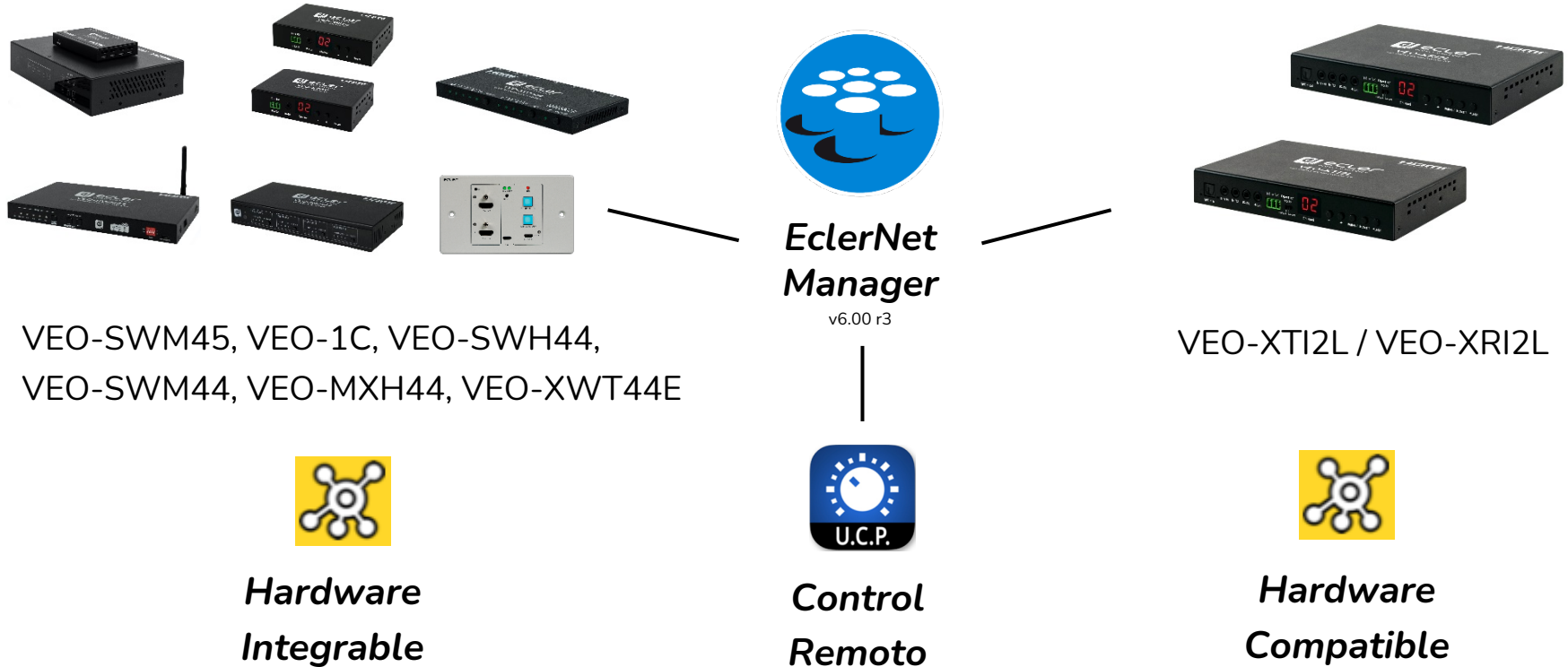
EclerNet Manager

Gestión de Dispositivos

Control Remoto



Integración AV en EclerNet Manager



Integración AV en EclerNet Manager

Hardware Compatible: Estos dispositivos están incluidos en EclerNet Manager. Permite a los usuarios configurarlos nativamente en el software

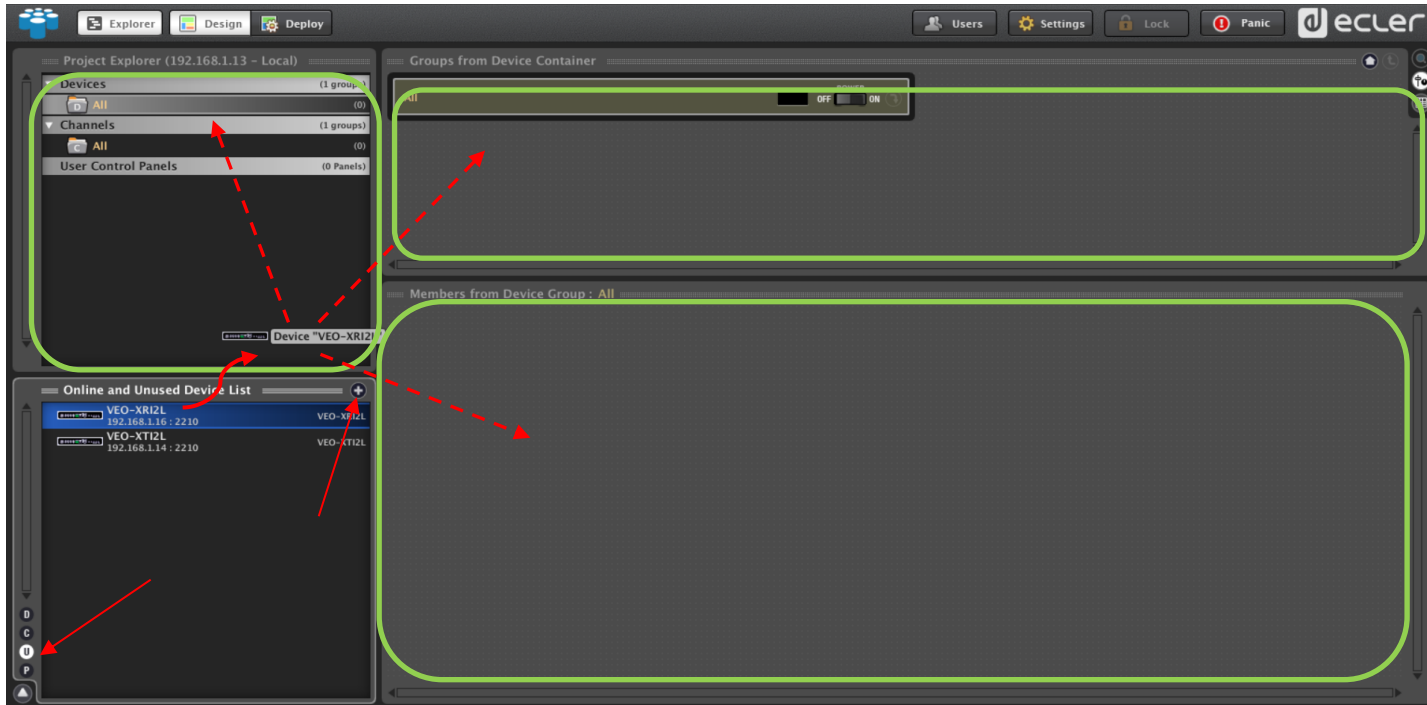
Hardware Integrable: Estos dispositivos (Ecler o de terceros) se pueden controlar usando comandos TCP/UDP ya sea mediante una conexión LAN o RS-232 *

* En este caso será necesario un conversor RS232-TCP/IP como el ETH232AD o similar

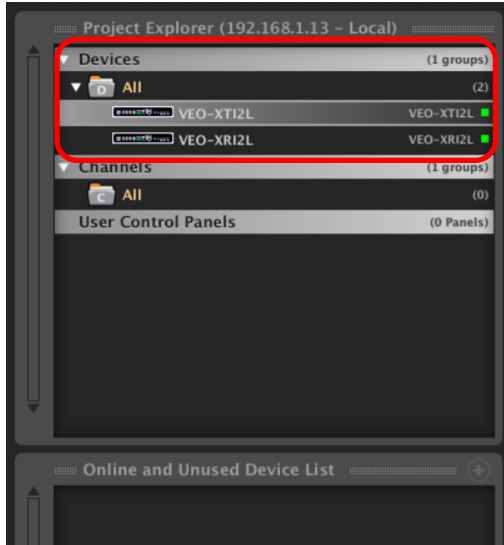
	Conexión	Dispositivo
Compatible	TCP / UDP	VEO-XTI2L, VEO-XRI2L
Integrable	TCP / UDP	VEO-SWM45, VEO-MXH44, VEO-XTI1C, VEO-XRI1C
	RS-232 (ETH232AD)	VEO-SWH44, VEO-SWM44

Hardware Compatible

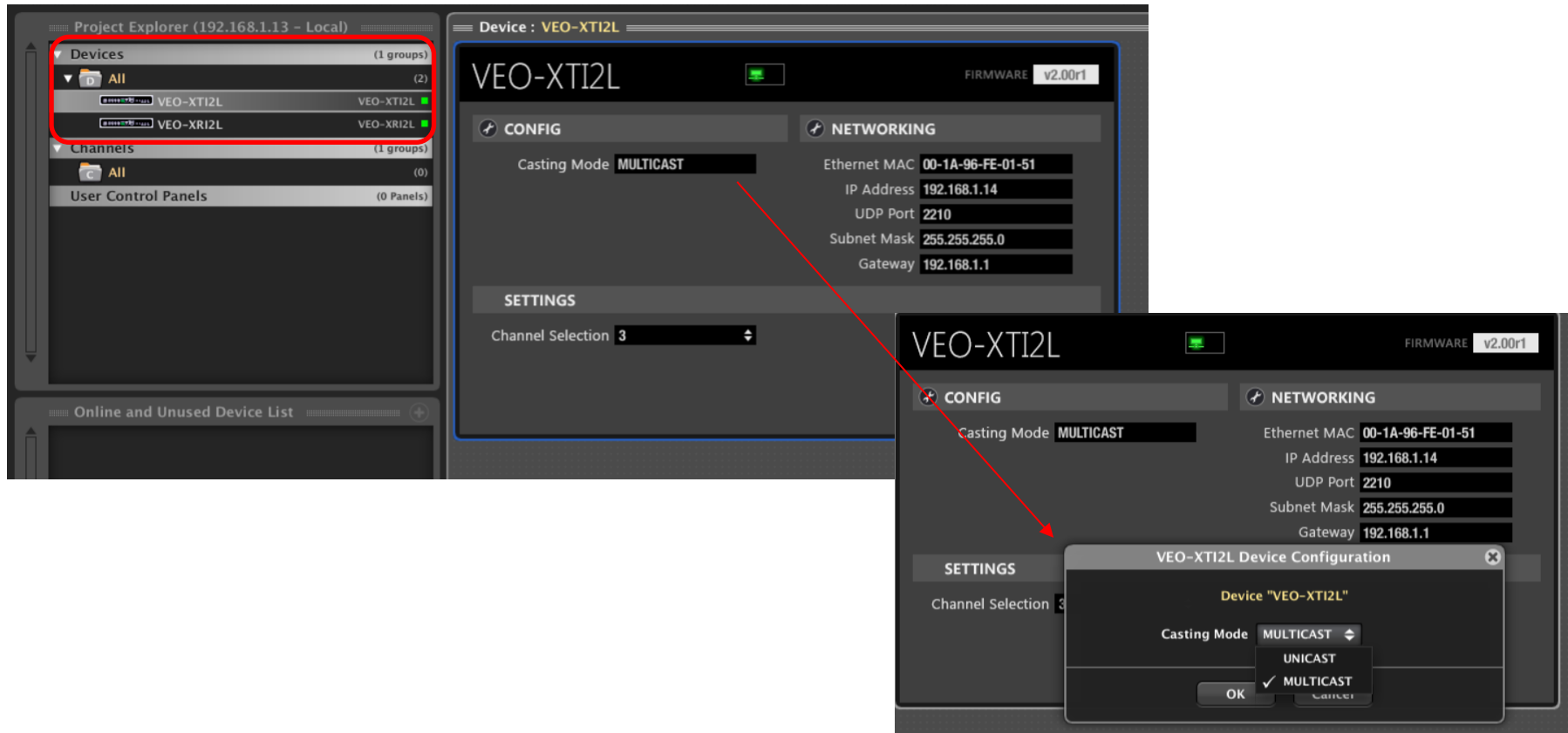
Arrastrar & soltar cada dispositivo en cualquiera de los espacios de trabajo



Hardware Compatible



Hardware Compatible



The screenshot displays the ecler VEO-XTI2L software interface. On the left, the 'Project Explorer (192.168.1.13 - Local)' panel shows a tree structure with 'Devices' (1 groups) containing 'All' (2) items: 'VEO-XTI2L' and 'VEO-XRI2L'. Below this are 'Channels' (1 groups) with 'All' (0) and 'User Control Panels' (0 Panels). The main area shows the 'Device : VEO-XTI2L' configuration page. The 'CONFIG' tab is active, showing 'Casting Mode' set to 'MULTICAST'. The 'NETWORKING' tab shows Ethernet MAC '00-1A-96-FE-01-51', IP Address '192.168.1.14', UDP Port '2210', Subnet Mask '255.255.255.0', and Gateway '192.168.1.1'. The 'SETTINGS' tab shows 'Channel Selection' set to '3'. A red arrow points from the 'MULTICAST' dropdown in the 'Casting Mode' field to a 'VEO-XTI2L Device Configuration' dialog box. This dialog box shows the 'Device "VEO-XTI2L"' configuration with 'Casting Mode' set to 'MULTICAST' (checked), 'UNICAST', and 'MULTICAST' options. The dialog has 'OK' and 'Cancel' buttons.

Project Explorer (192.168.1.13 - Local)

- Devices (1 groups)
 - All (2)
 - VEO-XTI2L
 - VEO-XRI2L
- Channels (1 groups)
 - All (0)
- User Control Panels (0 Panels)

Device : VEO-XTI2L

FIRMWARE v2.00r1

CONFIG

Casting Mode: **MULTICAST**

NETWORKING

Ethernet MAC: 00-1A-96-FE-01-51
IP Address: 192.168.1.14
UDP Port: 2210
Subnet Mask: 255.255.255.0
Gateway: 192.168.1.1

SETTINGS

Channel Selection: 3

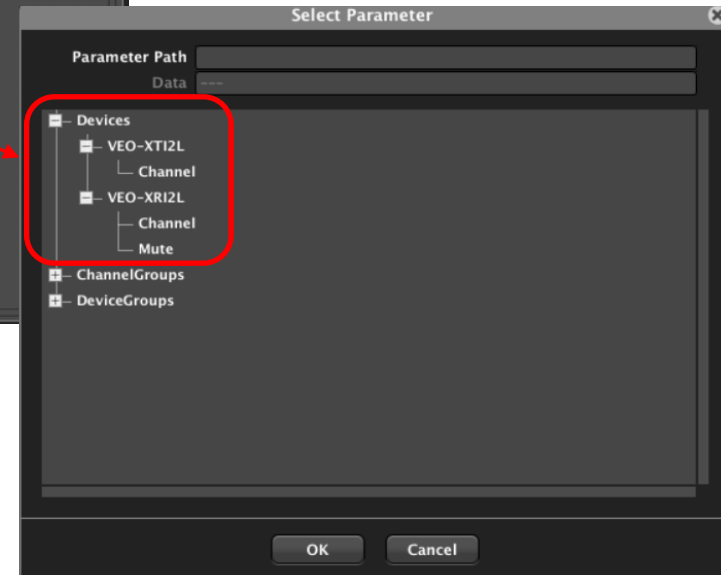
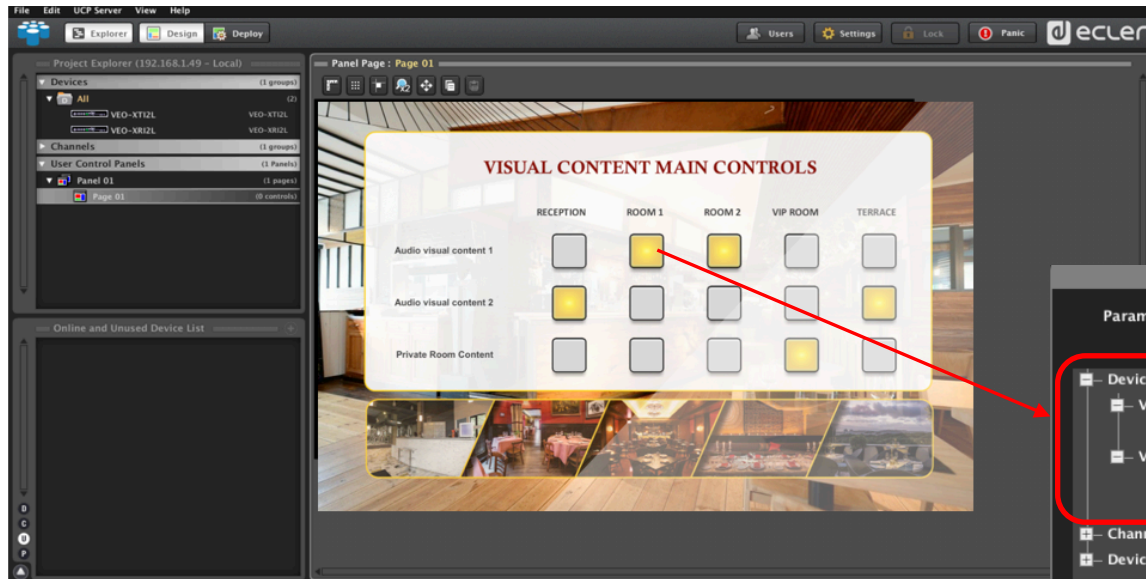
VEO-XTI2L Device Configuration

Device "VEO-XTI2L"

Casting Mode: **MULTICAST** (checked)
UNICAST
MULTICAST

OK Cancel

Hardware Compatible



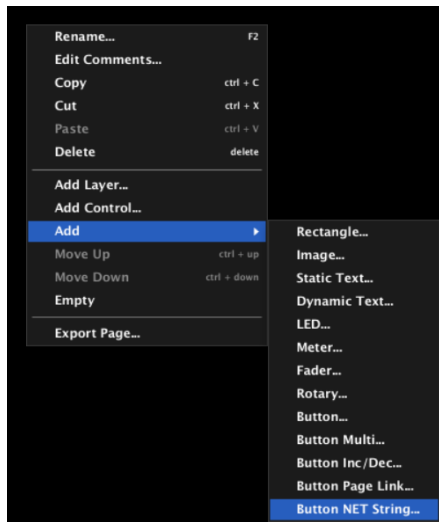
Hardware Integrable

Botón Net String

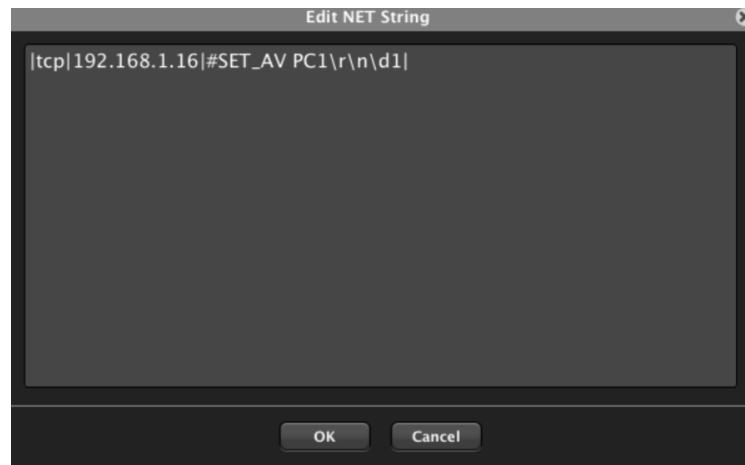
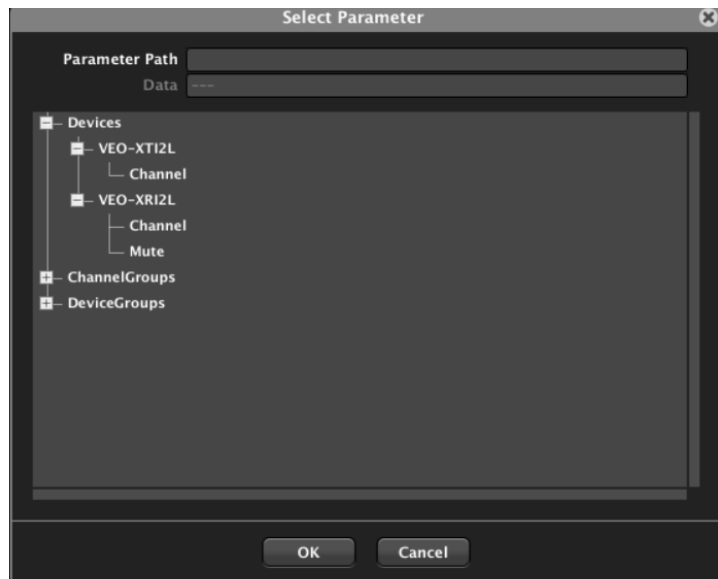
¿Qué son?

Es un botón en EclerNet Manager que permite **enviar una cadena simple o múltiple de comandos UDP o TCP* a un puerto IP conocido** para controlar dispositivos Ecler o de terceros. Esta es una herramienta muy útil para la gestión del video, audio, iluminación, etc. en paneles UCP.

*Estos comandos se proporcionan en los manuales de usuario de cada dispositivo



Botón Net String



Botón Net String

Un *comando en un botón Net String* ha de ser escrito siguiendo el formato: **|protocol|address|port|text|**

- **Protocol:** puede ser “UDP” o “TCP”
- **Address:** dirección IP destino
- **Port:** puerto destino
- **Text:** comando a enviar

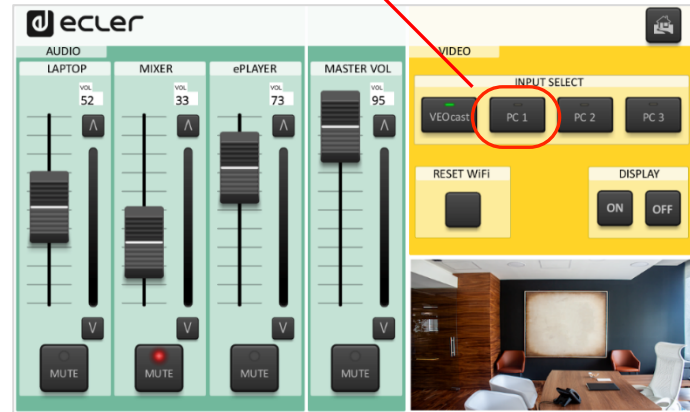
Botón Net String

Un *comando en un botón Net String* ha de ser **escrito** siguiendo el formato:

|protocol|address|port|text|

- **Protocol:** puede ser “UDP” o “TCP”
- **Address:** dirección IP destino
- **Port:** puerto destino
- **Text:** comando a enviar

|TCP|192.168.1.16|#SET_AV PC1\r\n\d1|



Botón Net String

Parámetros auxiliares de un **botón Net String**:

- \r: retorno de carro
- \n: salto de línea
- \dN: delay añadido

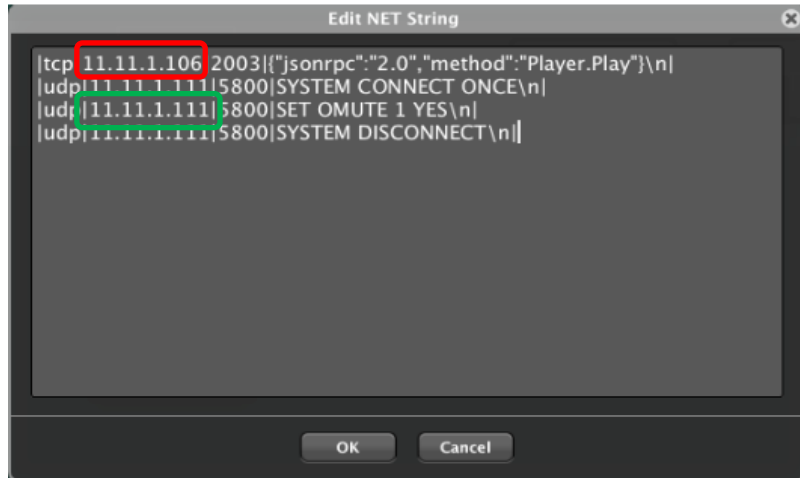
\d[1...9]: 100 ms ... 900 ms

\d3\d9: 1200 ms

Botón Net String

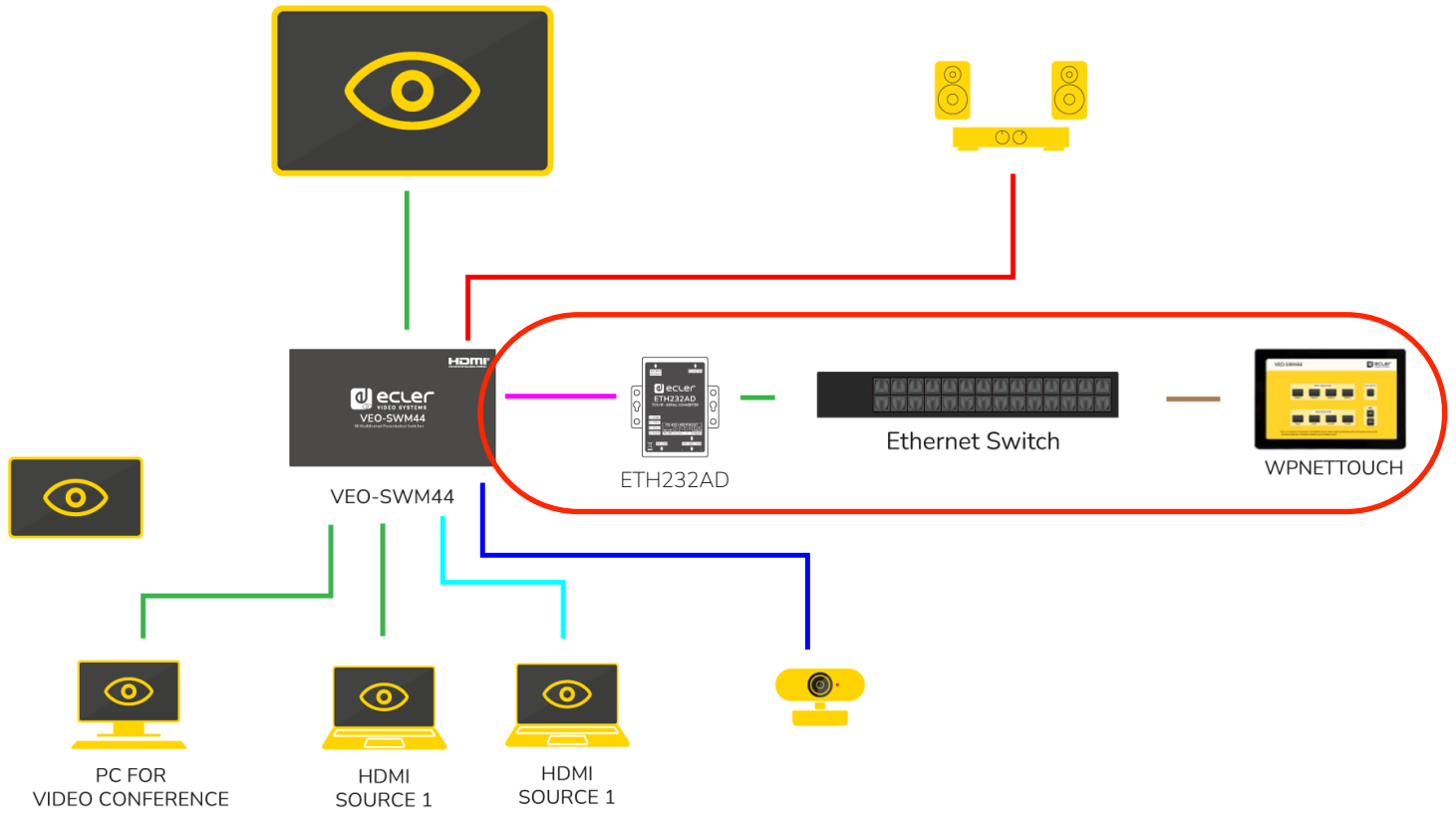
¿Es posible crear una rutina de control?

- Múltiples comandos en un único botón Net String
- Superponer múltiples botones Net String con comandos simples



Instalación AV

- HDMI
- ETH
- SPDIF
- Rs-232
- USB-C
- USB



ETH232AD

Conversor
Serie – TCP/IP



VEO-SWM44

Comandos serie RS-232



ETH232AD

ETH

Rs-232



Ethernet Switch

Paquetes TCP/UDP



WPNETTOUCH

ETH232AD

Conversor
Serie – TCP/IP



ETH

Rs-232



WPNETT



Basic Advance Security

Serial Settings

Device Name: ETH232AD

Data Baud Rate: 115200

Data Bits: 8

Data Parity: None

Stop Bits: 1

Flow Control: None

Serial Type: RS232

Network Settings

DHCP Client: Disable

Static IP Address: 192.168.0.232

Static Subnet Mask: 255.255.255.0

Static Default Gateway: 192.168.0.1

Static DNS Server: 192.168.0.1

Connection Type: TCP

TCP Keep Alive: ON

Transmit Timer: 10
Please enter an integer between 10~65535 ms

Server/Client Mode: Server

Server Listening Port: 5000
Please enter an integer between 1~65535

Client Destination Host Name/IP: 192.168.0.200
Please enter host name or IP address

Client Destination Port: 5000
Please enter an integer between 1~65535

Apply Cancel Reboot Restore default



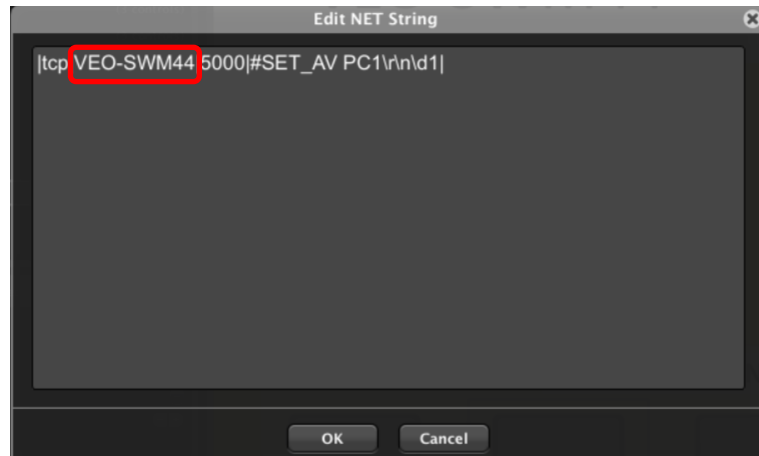
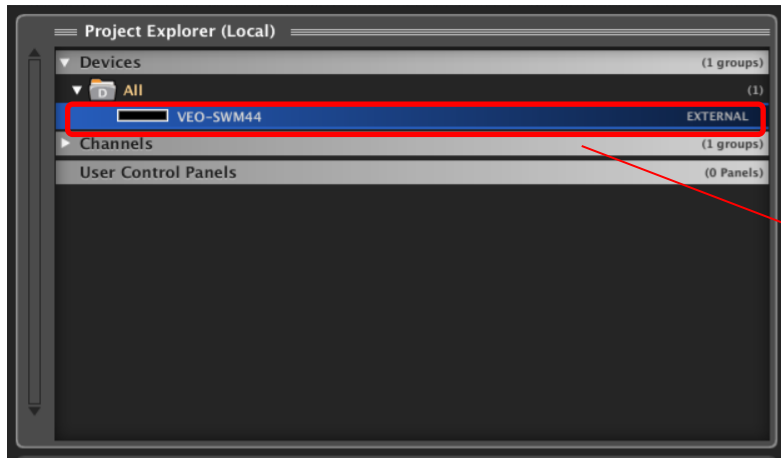
ETH232AD

P/UDP

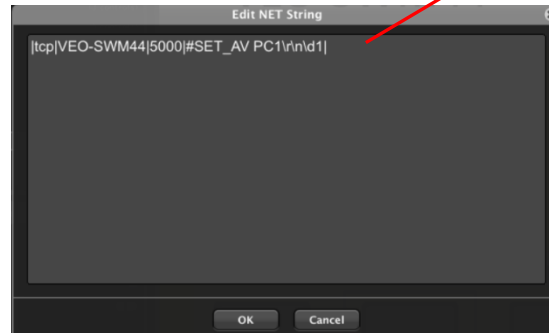
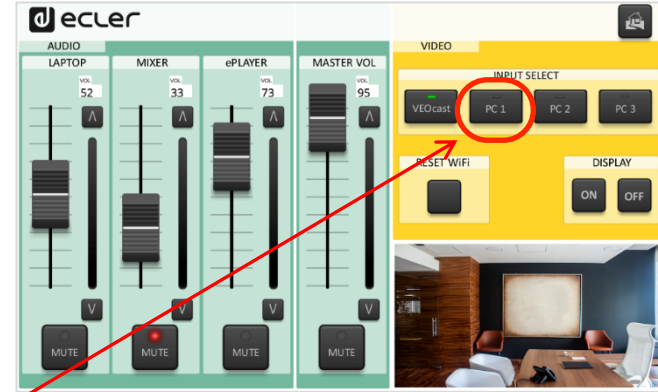
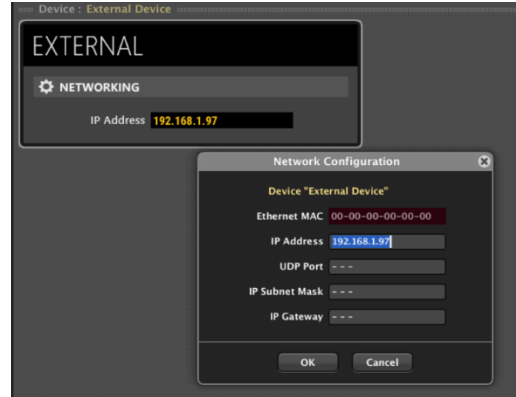
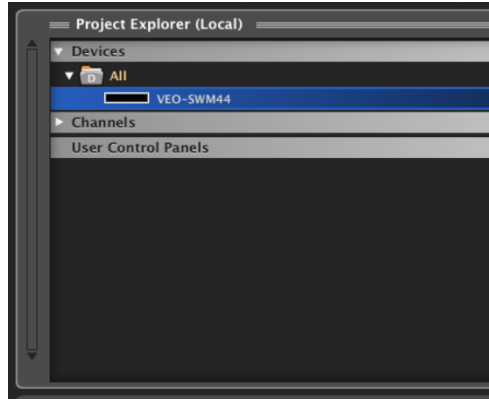
External Device

Alias ID

Un “*External Device*” permite **operar un dispositivo con un alias ID** en vez de tener que introducir la dirección IP completa



Configuración del Hardware Integrable



Gracias!

techsupport@ecler.com

projects@ecler.com

v.arranz@ecler.com