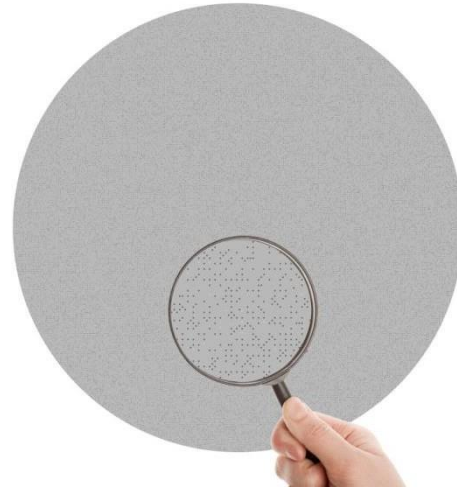


## LEA-1004

### ACOUSTIC PANELS

950 x 40mm PET Absorbent



### PRODUCT OVERVIEW

LEA (Lightweight Ecological Absorbent) is an acoustic panel made of recycled material (PET) with a high absorption performance in medium and high frequencies. Its acoustic properties ensure a significant reduction of the room reverberation time that reflects to a better acoustic comfort. LEA panels can be quickly installed suspended from a ceiling (accessories included). This acoustic panels can be managed easily and cleaned up whenever is needed.

### KEY FEATURES

- High absorption on medium and high frequencies
- Lightweight
- Easy and quick installation (accessories included)
- Ecologic product: +65% of the built material coming from recycled plastic bottles (PET)
- Safety manipulation: VOC French A+ Class classification according to ISO16000 certification. Low emission level of harmful/toxic substances
- Classified as Class 1 of least harmful level in terms of skin contact according to STANDARD 100 by OEKO-TEX®
- Easy to clean and cut product

### APPLICATIONS

- Restaurants
- Classrooms
- Meeting rooms
- Offices
- Public spaces

### CERTIFICATIONS

- B-s2, d0 reaction to fire classification according to EN13501-1 (Europe)
- Class A according to ASTM-E84 (USA)

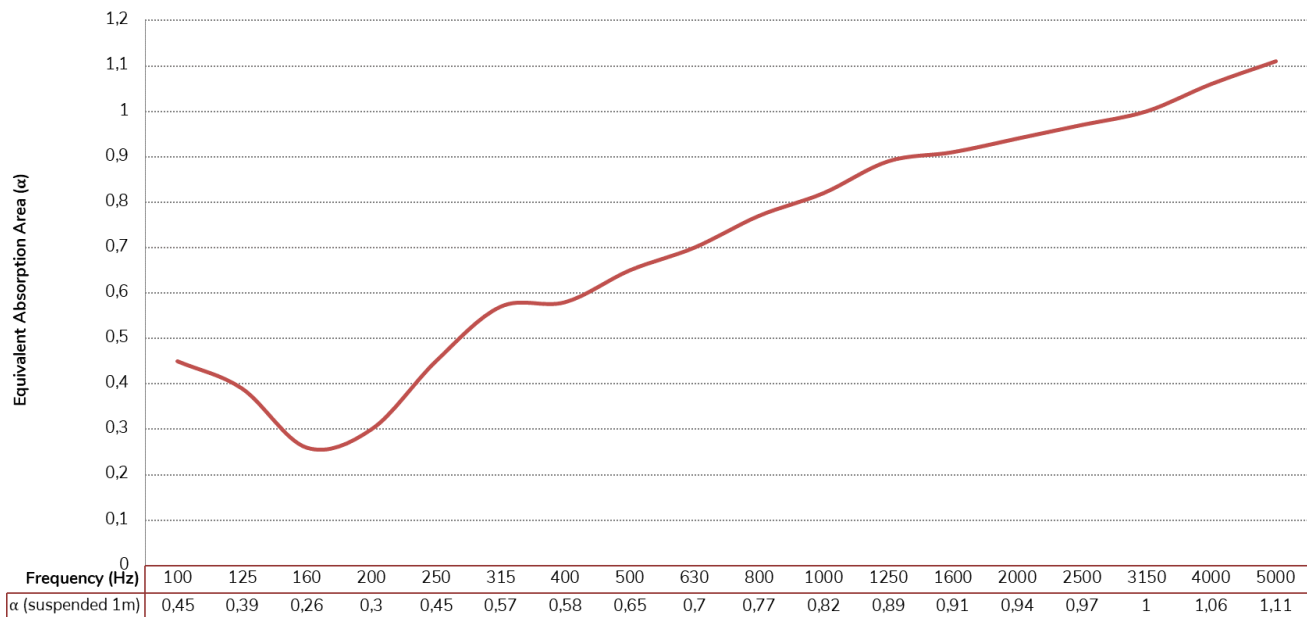
TECHNICAL SPECIFICATIONS

LEA-1004

Absorption performance	Medium and high frequencies
NRC	0,61
Material	PET
Fire Class	EU: Euroclass B-s2, d0 USA: Class A (ASTM-E84) CAN: ULCS102, Flame Spread Rating: 5, Smoke Develop: Class115
Emission level of harmful/toxic substances	VOC French A+ Class (ISO16000)
Skin contact harmful levels	Class 1 (STANDARD 100 by OEKO-TEX®)
Product finish	Points of View Collection
Fixing system	Suspended fixation
Cable length	1,2m
Recommended suspended distance	30cm-1m from ceiling
Units per box	4 units
Dimensions	950 x 40mm / 37.4" x 1.6"
Surface per unit	0.79m <sup>2</sup>
Surface per box (4u)	3.16m <sup>2</sup>
Density	80 kg/m <sup>3</sup>
Weight / unit area	3200 g/m <sup>2</sup>

ACOUSTIC ABSORPTION COEFFICIENT

LEA 1004: Equivalent Absorption Area



## INSTALLATION

**IMPORTANT NOTE:** LEA panels 100x4cm are designed to be installed in ceilings, using the included accessories. Please follow these instructions for a satisfying result. For other method of installation not described in the [installation guide](#), address to your supplier, distributor or fill the contact form in our website, at Support / Technical Request.

We highly recommend that, for wall composition installations, the panels used must belong to the same production batch. Each batch will have its own code, in order to avoid slight colour variations that may occur between batches.



All product characteristics are subject to variation due to production tolerances. **NEEC AUDIO BARCELONA S.L.** reserves the right to make changes or improvements in the design or manufacturing that may affect these product specifications.

For technical requests address to your supplier, distributor or fill the contact form in our website, at Support / Technical Request.

Motors, 166-168 08038 Barcelona - Spain - (+34) 932238403 | [information@ecler.com](mailto:information@ecler.com) | [www.ecler.com](http://www.ecler.com)