

eMOTUS5PB

SURFACE MOUNT CABINETS

Powered Loudspeakers – Stereo kit



PRODUCT OVERVIEW

eMOTUS5PB is a stereo loudspeaker kit including an active and a passive cabinet. eMOTUS5PB performs BT connection, balanced and unbalanced audio inputs. Moreover, it includes an IR remote control and 0-10VDC remote port for volume control. A professional and compact loudspeaker stereo kit, a user-friendly and cost-effective formula with a fantastic performance and a unique design that will easily fit in a massive number of multimedia applications: education classrooms, corporate meeting rooms, retail stores, etc. Available in white colour.

KEY FEATURES

- Stereo kit: 2x25W RMS
- 2-ways: 5" woofer + 1" tweeter
- 2 analogue audio inputs (balanced- Euroblock and unbalanced-RCA)
- BT connection with priority (selectable)
- Sound source selection
- 2-band tone control
- Stereo/mono switch
- Remote port (RJ-45) for volume control (WPmVOL compatible)
- Auto stand-by
- Includes remote control, wall bracket and security steel cable
- Available in white finish

APPLICATIONS

- Classrooms
- Meeting rooms
- Multimedia presentations (in combination with video projectors, screens, etc.)
- Retail shops
- Museums and exhibitions
- Hotel rooms

ACCESSORIES AND COMPATIBLE PRODUCTS

- WPmVOL



TECHNICAL SPECIFICATIONS

eMOTUS5PB

System	
Effective frequency range ¹	85Hz – 20kHz
Coverage angle ²	124°x124° (HxV)
Power handling	25 W RMS / 100 W Peak
Sensitivity ³	77 dB (1W/1m) - TBC
Maximum SPL ⁴	91 dB continuous / 97 dB peak - TBC
Recommended amplifier power	50 W RMS
Transducers	
Ways	2
Low frequency driver	5" woofer
High frequency driver	1 tweeter"
Nominal impedance	8Ω
Physical	
Grille material	Aluminium
Mounting system	Cabinet
Included accessories	Remote control, wall bracket and security steel cable
Finished colour	White (RAL 9003)
Dimensions (WxHxD)	Not including brackets: 173 x 185 x 180 mm / 6.81 x 7.28 x 7.09 in. Including brackets: 173 x 248 x 180 mm / 6.81 x 9.76 x 7.09 in.
Weight	4.8 kg / 10.58 lb 5.3 kg / 11.68 lb (including accessories)
Powered	
Power	2 x 25 W RMS / 100 W Peak
Audio inputs	2 analogue audio inputs (balanced-Euroblock and unbalanced-RCA)
THD + Noise @1kHz Full power	≤0.5%
Input sensitivity	525mV/22k Ω
CMRR	≥80dB
Volume control	Remote port (RJ-45) for volume control (WPmVOL compatible)
Tone control	±14dB
Mains	115 / 230VAC (selectable)
Power consumption (pink noise, 1/8 power @ 8ohm)	≤10.5W
Power consumption (pink noise, 1/3 power @ 8ohm)	≤23W
Power consumption Stand-by	≤3W
BT module	
	BT 4.0 Compliant Class II Range up to 10 Meters Supported BT Profiles: A2DP v1.2, AVRCP v1.4, HFP v1.6, HSP v1.2

aptX, SBC, MP3 and AAC decoder support

Remote control

Fosc	455 kHz
Carrier frequency	38 kHz NEC format
Battery	Lithium Cell CR2025 3V

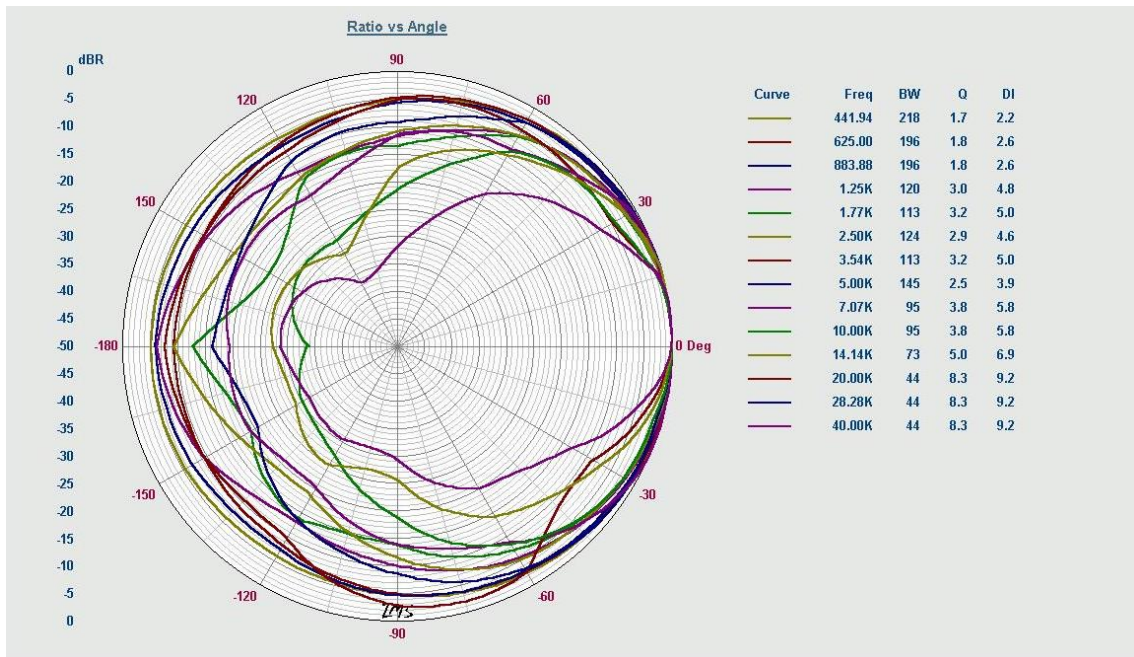
¹10dB below the sound pressure level at specified sensitivity

²6dB below the sound pressure level than that at the direction of maximum level, Max. angle between 1 kHz and 4 kHz.

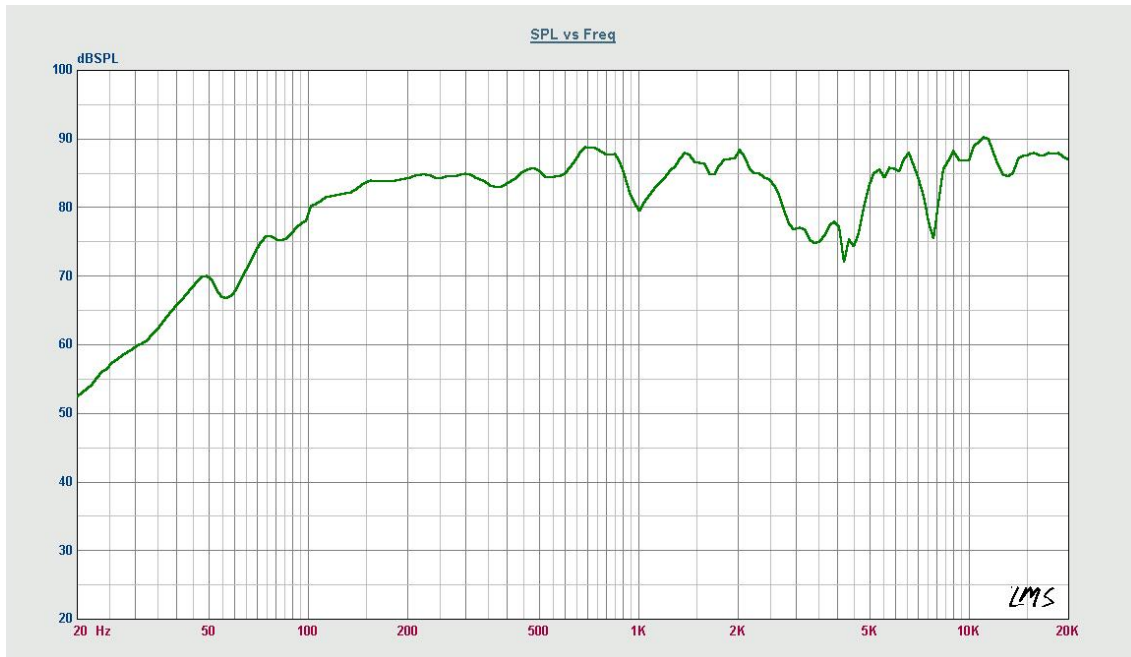
³Measured on-axis, far field and referenced to 1 meter by inverse square law. Average from 100 Hz to 10 kHz.

⁴Calculated from sensitivity and power handling specifications, exclusive of power compression

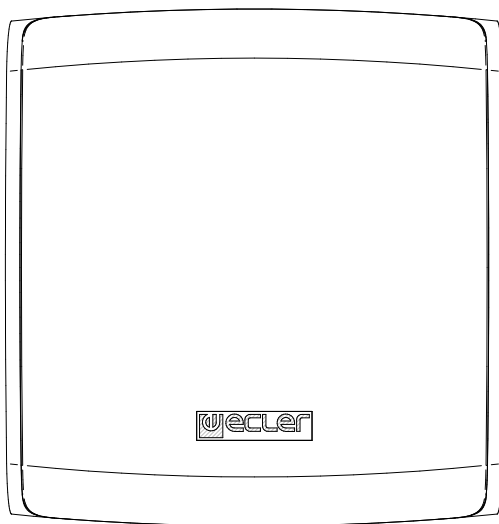
POLAR DIAGRAMS



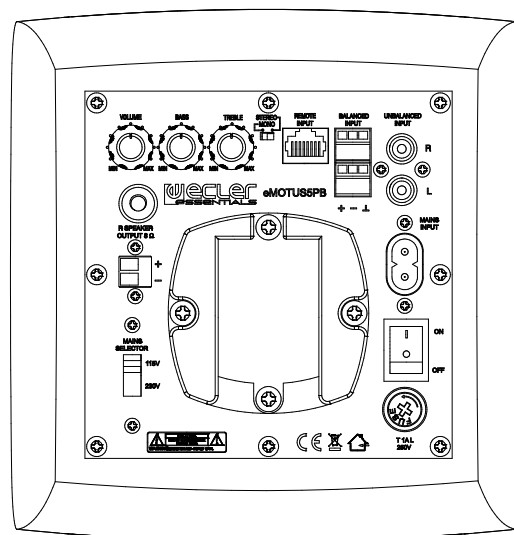
FREQUENCY RESPONSE



MECHANICAL DIAGRAMS

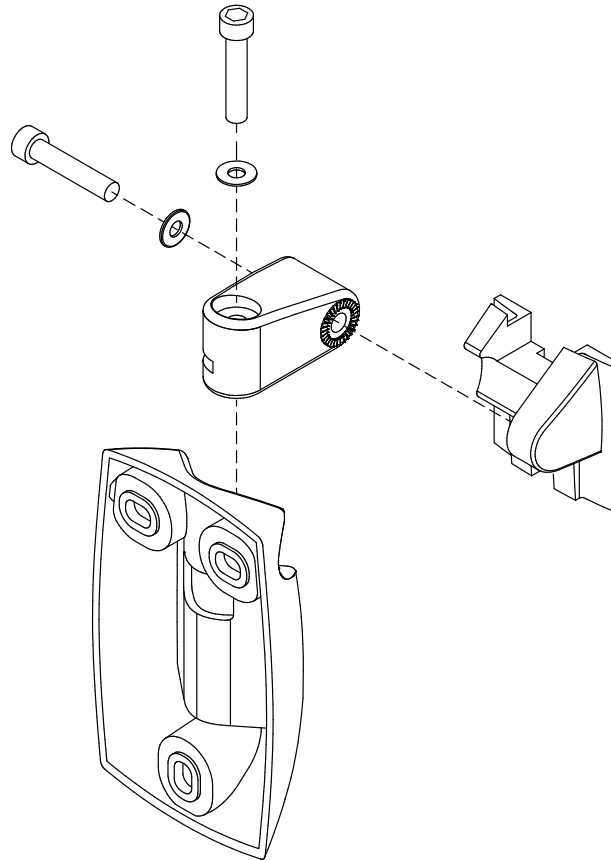


FRONT



REAR

WALL SUPPORT MOUNTING DIAGRAM





All product characteristics are subject to variation due to production tolerances. **NEEC AUDIO BARCELONA S.L.** reserves the right to make changes or improvements in the design or manufacturing that may affect these product specifications.

For technical requests address to your supplier, distributor or fill the contact form in our website, at [Support / Technical Request](#).

Motors, 166-168 08038 Barcelona - Spain - (+34) 932238403 | information@ecler.com | www.ecler.com